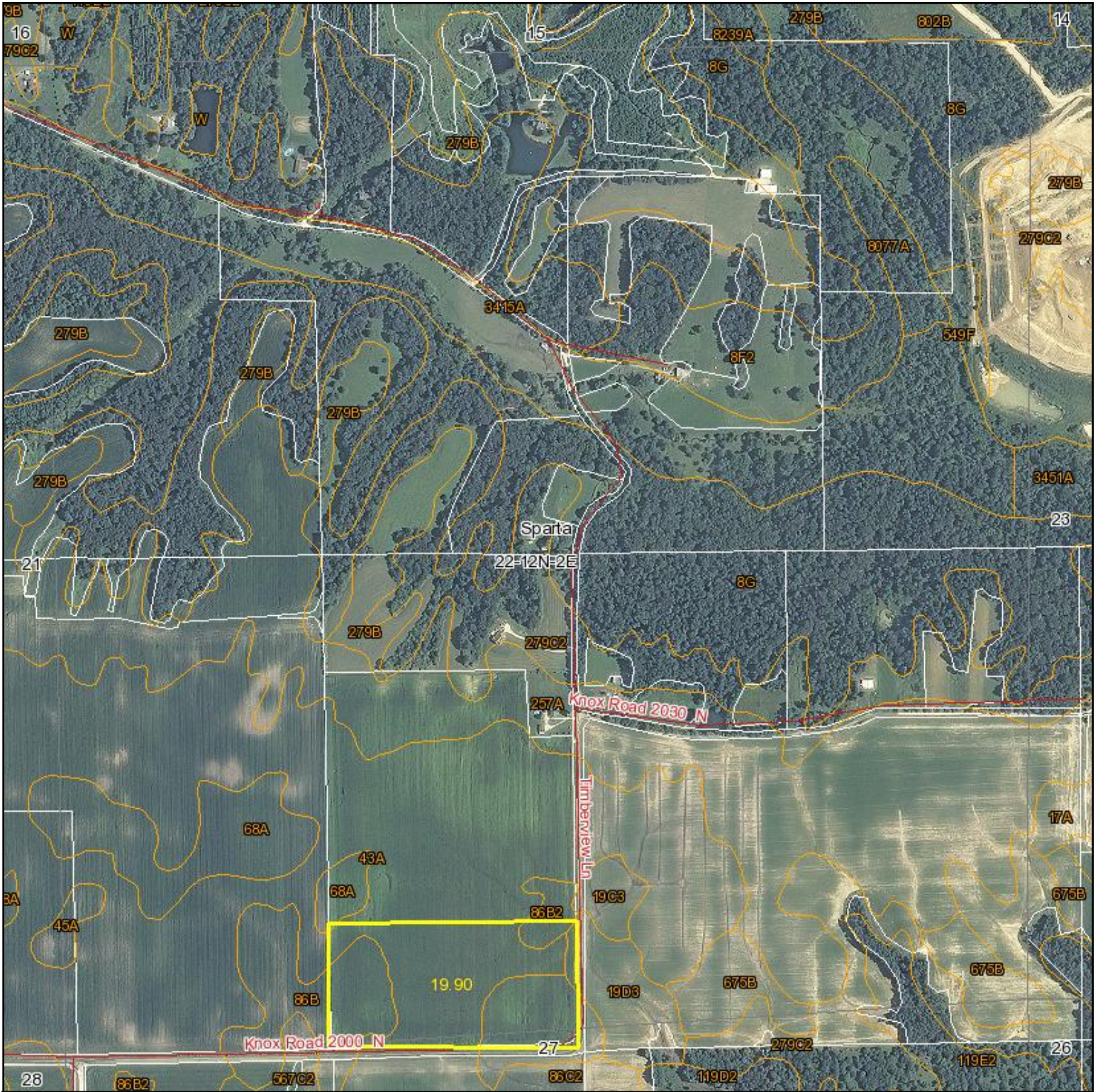


Aerial Map



map center: 41° 0' 44.01, 90° 15' 32.79

scale: 10030



9/10/2011

22-12N-2E
Knox County
Illinois



Maps provided by:

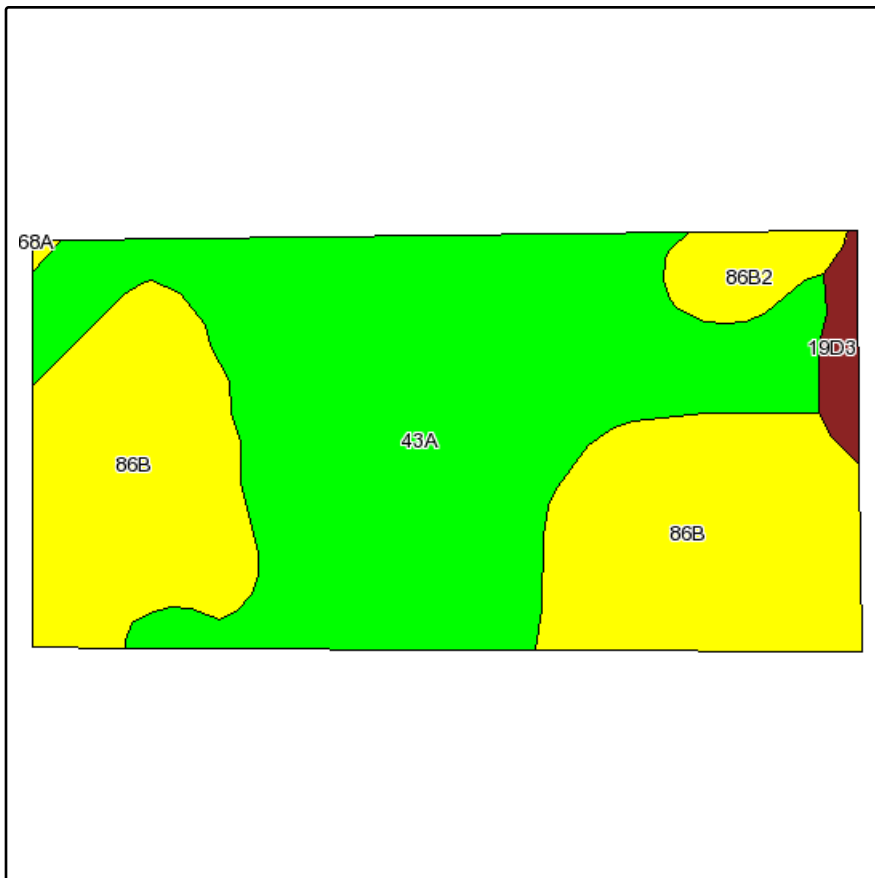


©AgriData, Inc. 2011

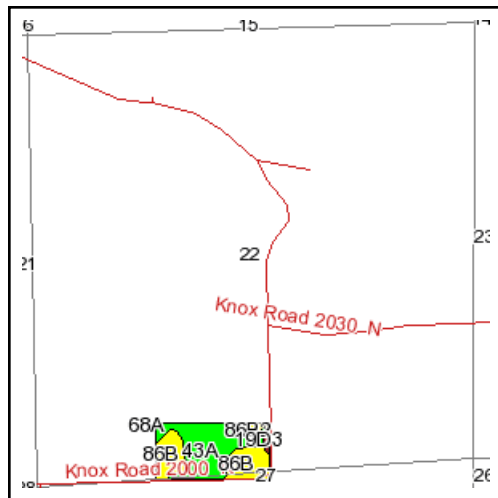
www.AgriDataInc.com

Field borders provided by Farm Service Agency as of 5/21/2008. Aerial photography provided by Aerial Photography Field Office. PLSS provided

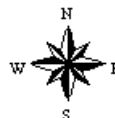
Soils Map



Fsa borders provided by the Farm Service Agency as of May 23, 2008.
 Soils data provided by USDA and NRCS.
 PLSS provided by Illinois State Geological Survey.



State: **Illinois**
 County: **Knox**
 Location: **022-012N-002E**
 Township: **Sparta**
 Acres: **19.9**
 Date: **9/10/2011**



Maps provided by:



©AgriData, Inc 2008
 www.AgriDataInc.com

Code	Soil Description	Acres	Percent of field	Non-Irr Class Legend	Non-Irr Class	*Corn	*Grass legume hay	*Grass legume pasture	*Oats	*Soybeans	*Winter wheat
43A	Ipava silt loam, 0 to 2 percent slopes	11	55.0%		I	172	5.3	7.8	90	56	69
86B	Osco silt loam, 2 to 5 percent slopes	7.8	39.2%		Ile	170	6.2	9	91	53	67
86B2	Osco silt loam, 2 to 5 percent slopes, eroded	0.7	3.6%		Ile	163	5.9	8.7	87	51	65
19D3	Sylvan silty clay loam, 10 to 18 percent slopes, severely eroded	0.4	2.1%		IVe	107	2.9	4	50	35	43
Weighted Average						169.4	5.6	8.2	89.4	54.1	67.5

Topography Map



Maps provided by:



©AgriData, Inc. 2011
www.AgriDataInc.com

22-12N-2E
Knox County
Illinois

map center: 41° 0' 44.01, 90° 15' 32.79

scale: 10030



9/10/2011